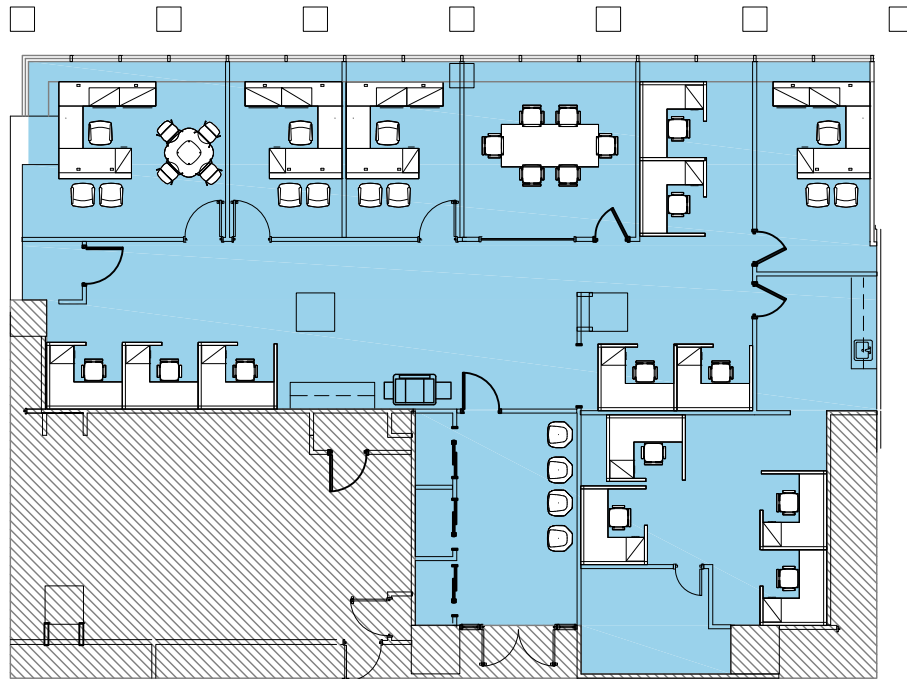
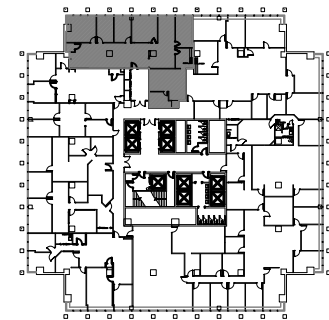


# EXPERIENCE THE NEW BLUE HILL PLAZA

# ONE BLUE HILL PLAZA PARTIAL 10TH FLOOR - 3,828 SQ. FT. AS-BUILT PLAN



| LEGEND               |       |
|----------------------|-------|
| ROOM TYPE            | COUNT |
| OFFICES              | 4     |
| RECEPTION            | 1     |
| CUBICLES 5'x6'       | 11    |
| CONFERENCE - SEATS 6 | 1     |
| CAFE                 | 1     |
| IT                   | 1     |
| STORAGE              | 1     |



Scale: N.T.S. 

A PROPERTY OF

GSNY

[WWW.BLUEHILLPLAZA.COM](http://WWW.BLUEHILLPLAZA.COM)

**CBRE**

**JAMES B. TULLY**  
Executive Vice President  
[james.tully@cbre.com](mailto:james.tully@cbre.com)  
201.712.5804

**SEAN MORLEY**  
First Vice President  
[sean.morley@cbre.com](mailto:sean.morley@cbre.com)  
201.712.5662

**FRED SULLIVAN**  
Associate  
[fred.sullivan@cbre.com](mailto:fred.sullivan@cbre.com)  
201.712.5894