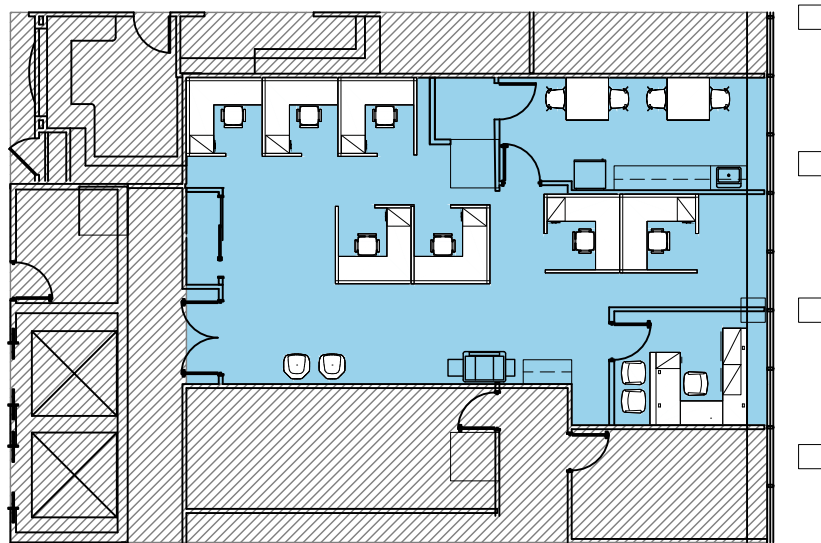
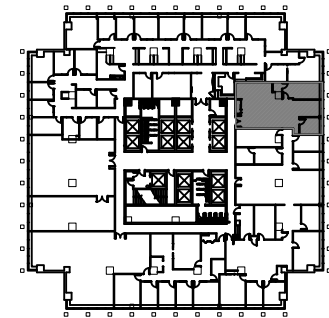


# EXPERIENCE THE NEW BLUE HILL PLAZA

## ONE BLUE HILL PLAZA PARTIAL 1ST FLOOR - 1,703 SQ. FT. AS-BUILT PLAN



LEGEND	
ROOM TYPE	COUNT
OFFICES	1
RECEPTION	1
CUBICLES 6'x6'	7
CAFE - SEATS 4	1
IT	1
PRINT/COPY	1



Scale: N.T.S 

[WWW.BLUEHILLPLAZA.COM](http://WWW.BLUEHILLPLAZA.COM)



**JAMES B. TULLY**  
Executive Vice President  
[james.tully@cbre.com](mailto:james.tully@cbre.com)  
201.712.5804

**SEAN MORLEY**  
First Vice President  
[sean.morley@cbre.com](mailto:sean.morley@cbre.com)  
201.712.5662

**FRED SULLIVAN**  
Associate  
[fred.sullivan@cbre.com](mailto:fred.sullivan@cbre.com)  
201.712.5894

A PROPERTY OF

