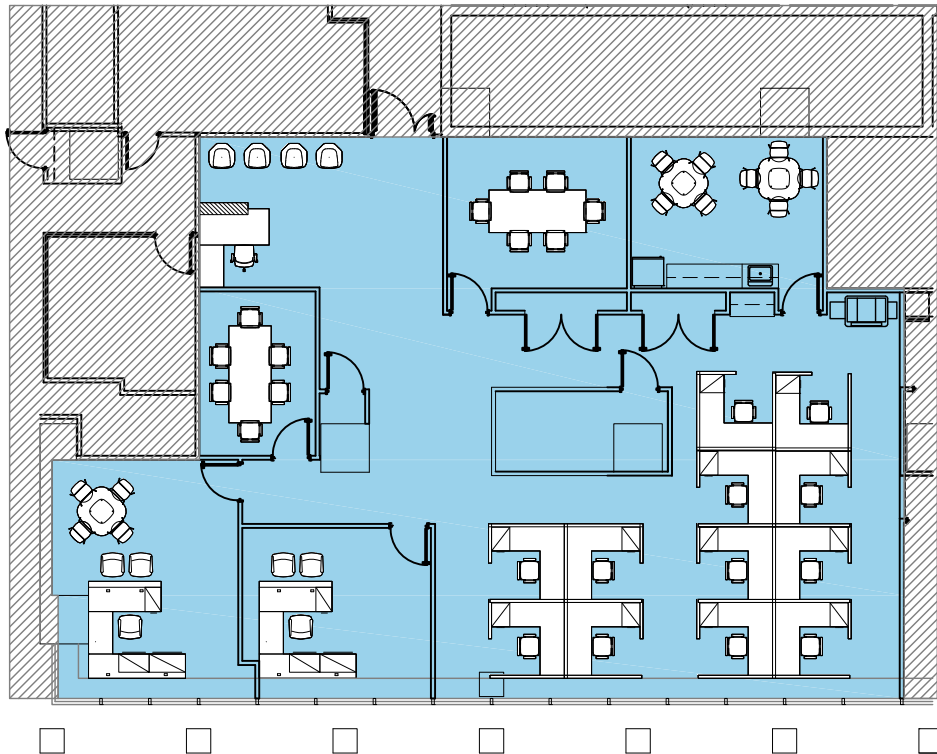
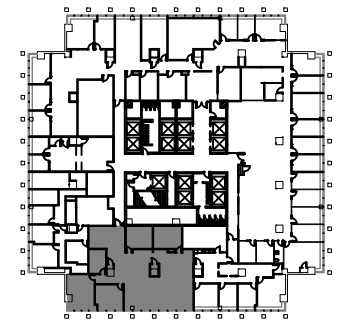


# EXPERIENCE THE NEW BLUE HILL PLAZA

## ONE BLUE HILL PLAZA PARTIAL 3RD FLOOR - 4,132 SQ. FT. AS-BUILT PLAN



LEGEND	
ROOM TYPE	COUNT
OFFICES	2
RECEPTION	1
CUBICLES 6'x6'	12
CONFERENCE - SEATS 6	2
PRINT/COPY	1
CAFE - SEATS 8	1
IT	1



Scale: N.T.S. 

A PROPERTY OF

GSNY

[WWW.BLUEHILLPLAZA.COM](http://WWW.BLUEHILLPLAZA.COM)

**CBRE**

**JAMES B. TULLY**  
Executive Vice President  
[james.tully@cbre.com](mailto:james.tully@cbre.com)  
201.712.5804

**SEAN MORLEY**  
First Vice President  
[sean.morley@cbre.com](mailto:sean.morley@cbre.com)  
201.712.5662

**FRED SULLIVAN**  
Associate  
[fred.sullivan@cbre.com](mailto:fred.sullivan@cbre.com)  
201.712.5894