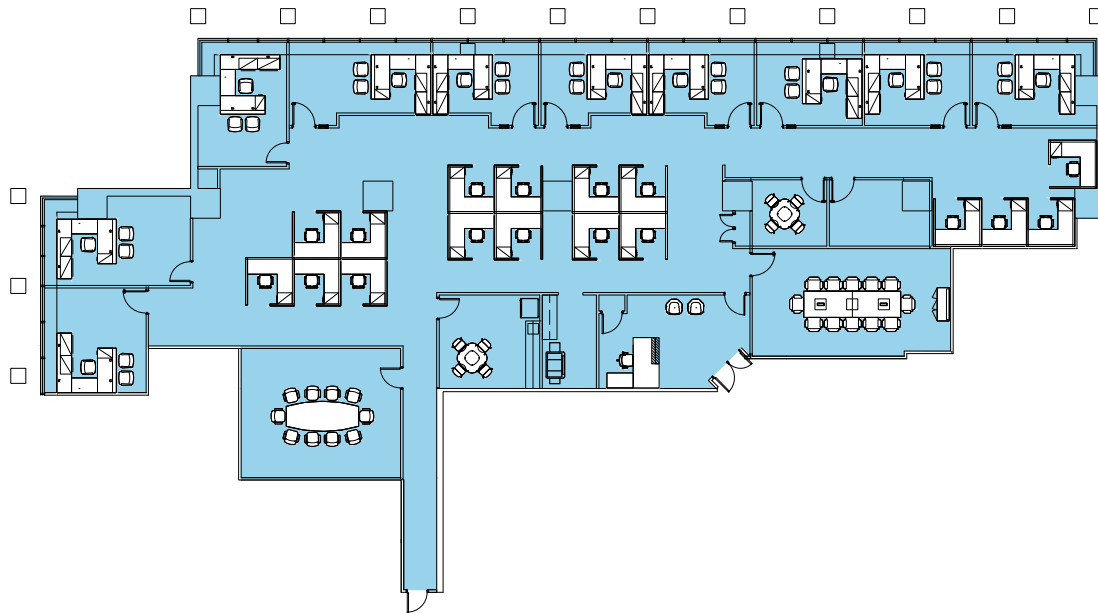
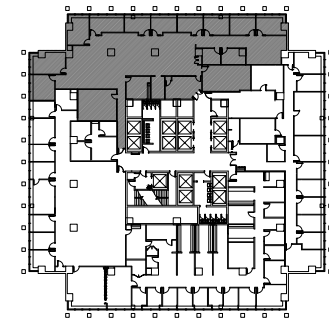


# EXPERIENCE THE NEW BLUE HILL PLAZA

## ONE BLUE HILL PLAZA PARTIAL 6TH FLOOR - 7,795 SQ. FT. AS-BUILT PLAN



LEGEND	
ROOM TYPE	COUNT
OFFICES	10
RECEPTION	1
CUBICLES 6'x6'	17
CAFE	1
Huddle - SEATS 4	1
PRINT/COPY	1
CONFERENCE - SEATS 10	1
CONFERENCE - SEATS 12	1
IT	1



Scale: N.T.S. 

A PROPERTY OF

GSNY

[WWW.BLUEHILLPLAZA.COM](http://WWW.BLUEHILLPLAZA.COM)

**CBRE**

**JAMES B. TULLY**  
Executive Vice President  
[james.tully@cbre.com](mailto:james.tully@cbre.com)  
201.712.5804

**JON MEISEL**  
Senior Vice President  
[jon.meisel@cbre.com](mailto:jon.meisel@cbre.com)  
732.509.2843

**FRED SULLIVAN**  
Associate  
[fred.sullivan@cbre.com](mailto:fred.sullivan@cbre.com)  
201.712.5894